

PRESQUE ISLE COUNTY 2023-2024 ANNUAL REPORT

**SOCIAL MEDIA
REACH**

22,867

**PROGRAMMING
REACH**

1,247

**PROGRAMS
ACCESSED BY
RESIDENTS**

118



I am very pleased to share the results of another successful year of partnership between Presque Isle County and Michigan State University (MSU) Extension. Because of your continued support, we've been able to make a difference in the lives of youth, families, businesses and communities. MSU Extension offers a broad range of research-based educational outreach to county residents. Over this past year, we've empowered families and individuals to live healthier lives, supported new and local businesses, created opportunities for youth leadership development and career exploration, helped farmers with business management and mental health, brought health programs to local schools, and much more. Our staff live and work alongside county residents and are rooted in community relationships and are responsive to community needs. Our partnership with you makes this all possible. On behalf of the MSU Extension team serving Presque Isle County, thank you for another great year. We look forward to your continued support and hope you will be able to join us during one of our upcoming programs.



Adam Koivisto
District 14 Director



[MSUE.MSU.EDU](https://msue.msu.edu)

Helping people improve their lives through an educational process that applies knowledge to critical issues, needs, and opportunities.



DEVELOPING YOUTH & COMMUNITIES



Tree planting to help preserve our local environment.

Some of this year's most memorable 4-H clubs and events included hiking, yoga, tree planting, embryology and archery. We are proud to share that our archery program is still going strong with over 50 youth being served during our last round of sessions. The six-session hiking club and tree planting events were gratefully enriched by a new partnership formed between 4-H and the Presque Isle Conservation District.



Embryology was taught in schools and three libraries throughout the county.



One of our many archery classes with students and volunteer leaders.



Jacob Grochowski, our local district forester educating kids during our hiking club.



Yoga class in Rogers City.



DEVELOPING YOUTH & COMMUNITIES



4-H Cloverbuds (above) painted t-shirts, planted seeds, made edible soil profiles, & learned how to prevent erosion in a day camp packed full of fun and learning. The Paul family welcomed Satsuki, a 14-year-old from Japan, into their home to experience life in Rogers City through the 4-H Global Exchange Program. (Lower right)



Youth having fun on a winter hike.



DEVELOPING YOUTH & COMMUNITIES



This year's Summer Rec Program was truly one to remember. Not only did campers join in on exciting recreational activities and field trips, but they also engaged in fun and meaningful lessons involving environmental science and healthy living. 60 participants were enrolled in this six-week program.



Youth enjoy the water slide which is always a hit!



Three youth enjoy a day at the beach.



Youth instructors dressed up for Halloween in July!



Youth enjoying views at the Besser Planetarium.



Students enjoy an Earth Science lesson.



Students play a donut hang game....no hands!



4-H Babysitting Clinics

During the months of February and May, twenty 10–16-year-olds participated in Babysitting Clinics facilitated by Kelly Vogelheim and Katie Parr. These were held throughout Presque Isle County. There was one held in Rogers City at Presque Isle District Library (13 kids), one held at Posen’s High School (7 kids) in May and one in Onaway (10 kids) in November. During the course the group discussed what it takes to be a good babysitter, child development and how to take care of children, the importance of good nutrition, and how to entertain and run their babysitting business. Most importantly, each participant was certified in CPR and First Aid by the American Heart Association. MSU Extension and 4-H are looking forward to getting more youth certified throughout Presque Isle County in the future.

“My favorite part of class was spending time with the teachers because they were amazing.”

-Posen participant



Graduating Babysitting classes: upper left, Onaway; upper right, Rogers City; and lower left is Posen.



IMPROVING HEALTH & NUTRITION

Community Nutrition Instructor Marilyn Ellenberger goes into local schools and teaches healthy and nutritious ways to snack and cook. This is just one of many programs offered by Ellenberger. Our community nutrition instructors work with local schools and community organizations to offer programs focused on nutrition and physical activity. The following pictures show one such program, Teen Cuisine, in Presque Isle County.



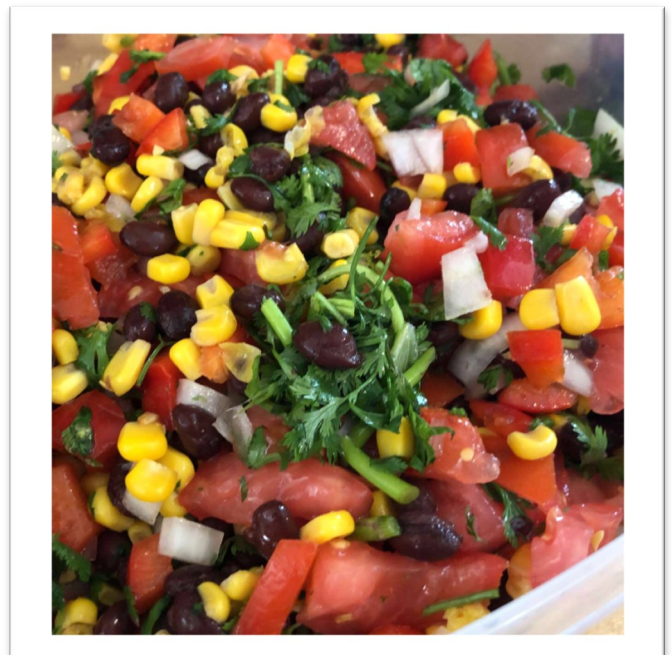
Students calculate the amount of fat in a fast food meal using shortening.



Our HNI Instructor, Marilyn Ellenberger, is shown here with one of the babysitting clubs she assisted with.



Students learned how to make a healthier version of ice cream!



Homemade fresh salsa is always a hit with the class.

FOSTERING STRONG COMMUNITIES



Dedicated to the protection and sustainable use of the Great Lakes and coastal resources, **Michigan Sea Grant** is a cooperative program of the University of Michigan, Michigan State University, and the National Oceanic and Atmospheric Administration. Through MSU Extension, Michigan Sea Grant works with Michigan citizens, industries, and coastal communities to encourage their use, benefits, and enjoyment of Great Lakes resources that positively influences our state's economy, environment and quality of life.



Conference attendees touring Great Lakes Fisheries Heritage exhibits at the Besser Museum.

Highlights of this year's programming include:

- **Lake Huron Regional Fisheries Workshops** provided an educational opportunity for more than 200 anglers, charter captains, and others learning with fisheries researchers and managers from across Michigan.
- **Great Lakes Fisheries Heritage Trail Network**, led by Michigan Sea Grant, partnered with Besser Museum and NOAA Thunder Bay National Marine Sanctuary to host nearly 30 people and museum partners from around the Great Lakes to attend the annual, statewide 2024 Great Lakes Fisheries Heritage Trail networking conference in Alpena, Michigan.
- **Sea Grant Center for Great Lakes Literacy provides education leadership for the Northeast Michigan Great Lakes Stewardship Initiative** which supported 88 educators and engaged more than 3,100 students, through their learning, in Great Lakes and natural resources stewardship projects in (and with) their communities across northeast Michigan.
- **4-H Great Lakes and Natural Resources Camp** is a statewide science, careers, and youth leadership camp and MSU pre-college program hosted in Presque Isle, Michigan, and serving nearly 70 campers.



4-H Great Lakes and Natural Resources campers explore fisheries science and maritime history.



Connecting with our Lake Huron fisheries - past and present -



SUPPORTING FOOD & AGRICULTURE

5,499

participants attended educational programs in person and virtually.

10,505

people were reached by mixed media outputs, including podcasts, trade magazine articles, newsletters and bulletins.

483

one-on-one consultations were held with stakeholders across Michigan.

\$720,000

in federal, state and commodity group funds were leveraged to support research that directly benefits growers.

PRIORITY

A R E A S

Michigan growers farm over 100,000 acres of vegetables across more than 3,000 farms, producing a uniquely diverse set of crops. Michigan is among the top five states in the production of asparagus, beets, celery, cucumbers, parsnips, radishes, snap beans, squash, tomatoes and turnips¹. Michigan State University (MSU) Extension has on-campus vegetable researchers and strategically placed educators who work with local vegetable growers in key regions.

¹USDA National Agricultural Statistics Service. (2022). Quick stats. <https://quickstats.nass.usda.gov/>

Contact Information

Ben Phillips: phill406@msu.edu
Ben Werling: werlingb@msu.edu
Chris Galbraith: galbra53@msu.edu
Salta Mambetova: mambetov@msu.edu

IMPACTS

MSU Extension helps vegetable growers learn about and incorporate new practices to help them reduce the risk posed by pests, improve their efficiency through new horticultural practices and increase revenue through improved product quality and marketing. Of those who attended an MSU Extension vegetable event, surveys revealed:



98%

learned something new and useful to help them manage risks.



79%

reported making a change on their farm related to managing risks.



97%

learned useful information about increasing efficiency on the farm.



73%

reported making a change on their farm related to increasing efficiency.



Pictured to the left are local farmers attending our virtual and northern Crop and Pest Update. This event happened on January 4, 2024, and took place in the Commissioners' room in the Presque Isle County Courthouse. All participants received weed guides and lunch. They are also eligible for four Restricted Use Pesticides and Certified Crop Adviser credits. Five educators spoke and this event had four proctored sites across Northern Michigan.



PRESQUE ISLE COUNTY OFFICE

This past year Presque Isle County MSU Extension has helped community members through phone, email, Facebook and office walk-ins.

As MSU Extension continues to bring research and education to citizens across the state, three wonderful resources help reach every community member in our

MSU Extension Lawn and Garden Hotline (888) 678-3464

Calls answered by Extension Master Gardeners with the knowledge and resources to help with gardening and lawn questions.

Ask Extension canr.msu.edu/outreach/ask-an-expert

One-to-one answers from MSU Extension experts on topics such as lawns, agriculture, food preservation, natural resources, and more!

Soil Testing homesoiltest.msu.edu

Don't guess - soil test! Learn what vital nutrient your soil is missing for healthy growth in gardens, lawns, and crops.

Purchase soil tests in our office or online.

MSU Extension Presque Isle County

106 Huron Ave, Suite C
Rogers City, MI 49779

PHONE: (989) 734-2168

EMAIL: msue71@msu.edu

WEB: www.canr.msu.edu/county

Stay Connected!

Scan the QR code to sign up for monthly emails highlighting local MSU Extension events and information you can use



MISSION:
Michigan State University Extension helps people improve their lives through an educational process that applies knowledge to critical needs and issues and opportunities.

MSU is an affirmative-action, equal-opportunity employer, committed to achieving excellence through a diverse workforce and inclusive culture that encourages all people to reach their full potential. Michigan State University Extension programs and materials are open to all without regard to race, color, national origin, gender, gender identity, religion, age, height, weight, disability, political beliefs, sexual orientation, marital status, family status or veteran status.

MSU Extension Staff in Presque Isle County

Adam Koivisto
District Director

koivist4@msu.edu

Wendy Martin
Office Manager

wendy.martin@affiliate.msu.edu

Marilynn Ellenberger
Community Nutrition Instructor

ellenbe4@msu.edu

Kelly Vogelheim
4-H Program Coordinator

vogelhe5@msu.edu

